



BUSINESS OPPORTUNITIES



South Central Light Rail Extension



INTRODUCTIONS

- Darron Rolle – Commercial Manager
- Jake Speck – Estimate Manager
- Kevin Snyder – Subcontracts Manager
- Tania Torres – Community Relations Specialist
- Yvette LeDesma – Business Development





Kiewit

- Established in 1884
- Employee Owned Company
- Office in Phoenix since 1964
- LRT construction expertise
 - North America
 - Locally
- Committed to Community Partnerships





AGENDA

- Project Overview
- Opportunities
- How to Connect with Us
- DBE Certification
- Other Opportunities
- Closing/Q&A





WHY EARLY OUTREACH?

- A lot of Interest from the Local Community
- Make Connections
- Communicate Early Opportunities
 - Preconstruction Phase Starts Soon
- Get Ready
 - Allow time for certifications and preparation





PROJECT OVERVIEW

South Central LRT Extension

SOUTH CENTRAL LRT EXTENSION ALIGNMENT

Background

- Roadway configuration
 - One lane each direction
 - 5 flared intersections
- Station locations
 - Baseline Road
 - Southern Avenue
 - Roeser Road
 - Broadway Road
 - Audubon Center
 - Buckeye Road
 - Lincoln Street
- Construction Manager @ Risk Delivery Model



SOUTH CENTRAL LRT EXTENSION SCHEDULE

Activity	Dates
RFP Due	Tuesday, May 2, 2017
Presentations/Interview	Monday, May 15, 2017
Notice of Preliminary Selection	June 2017
Preconstruction Phase	2017 – 2019
Construction Phase	2019 - 2023



OPPORTUNITIES

South Central LRT Extension

SOUTH CENTRAL LRT - OPPORTUNITIES

- Professional Services
- Construction Services & Materials
- General Business Services & Products

SOUTH CENTRAL LRT – PRECONSTRUCTION

- Utility Location
- Survey
- 3D Modeling
- Constructability Reviews
- Cost Estimating
- Scheduling
- Consultant Services
- Engineering Services
- Environmental
- Geotechnical
- Graphic Design
- Materials Management
- Meeting Facilitation
- Office Supplies & Equipment
- Printing
- Staffing
- Catering
- Delivery Services
- Janitorial
- Site Video & Photography

SOUTH CENTRAL LRT EXTENSION CONSTRUCTION OPPORTUNITIES

- Underground Utility Protection
- Traffic Control
- Erosion and Sediment Control
- Survey
- Quality Control
- Site Demolition
- Building Demolition
- Landscape And Irrigation
- Termite Control
- Water and Sewer Utilities
- Structural Steel
- Expansion Joints
- Storm Utilities
- Pavement Markings
- Fencing
- Asphalt
- Drilled Shafts
- Structural Concrete
- Site Concrete
- Precast Concrete
- Reinforcing Steel
- Sweeping
- Water Trucks
- Masonry



CONNECTING WITH US

CONNECTING WITH US

- Registration through website www.PHXlightrailopps.com
- Contact Procurement Group via email @ KiewitLRT@kiewit.com
- Required information for SBN Registration
 - DBE Certification by AZUCP/AZUTRACS
 - Large / Small Business Classification
 - Business Type: Subcontractor, consultant, supplier, professional services etc.
 - Bonding Information – Bond Rate (%)
 - Insurance Information
 - Company Experience including with Kiewit
 - References / Financials
 - Safety Information - EMR

www.PhxLightRailOpps.com

Phoenix Lightrail Extension Opportunities

[Home](#) [About the Project](#) [News/Events](#) [Opportunities](#) [Contact Us](#)



Preconstruction Opportunities for Both

- Utility Location
- Survey
- 3D Modeling
- Constructability Reviews
- Cost Estimating
- Scheduling
- Consultant Services
- Engineering Services
- Environmental
- Geotechnical
- Graphic Design

If your firm has specific expertise in any of these services/scopes please register with our team at to be considered when these bidding opportunities arise.

[Registration](#)

REGISTRATION



Company Invited:	Natalie Robinson - Test (SW - Test Email)	Manager:	Karla Purtell	Architect:		Submit Proposal
Due Date:	07-20-2016 02:00 PM	Phone:	(602) 437-7875	Owner:	City of Phoenix Aviation	View Communication
Project Status:	Open to Bid	Fax:				Send a Note
Project Location:	Phoenix Sky Harbor International Airport - Phoenix, AZ 85034 View location in Google Map.					

Invited Project Packages	Response
Project Packages	
7 - Quality Control	No Answer

Plan Room

[Project Files](#) | [Print Orders](#)

[Zip Checked Files & Download](#) | [Print at authorized vendor](#) | [Open in OST/OSX](#) | [Open in STACK Estimating](#)

Select All | Clear Selected | Collapse All | Expand All |

- Folder: General Documents (Click to Expand: 2 sub folders and 6 files)
- Folder: Map (Click to Expand: 0 sub folders and 1 files)
- Folder: Plans (Click to Expand: 0 sub folders and 1 files)
- Folder: Request for Quote (RFQ) (Click to Expand: 12 sub folders and 12 files)
- Folder: Schedule (Click to Expand: 0 sub folders and 1 files)
- Folder: Specs (Click to Expand: 0 sub folders and 1 files)

[Zip and Download this Folder](#)

[Click Here to View the Project](#)

If this link does not work, please go to <https://secure.smartbidnet.com/LKAA> and enter the access key [Yes, I'll Bid All Codes](#) | [No, I Won't Bid this Job](#) | [Click Here to View the Project](#)

ATTN: Natalie Robinson
(or Estimating Department)
Company Name: Natalie Robinson - Test (SW - Test Email)
Address: 1111
Riverton, UT - 84065
Phone: (801) 216-3268

INSURANCE AND BONDING

- Insurance as required by Section SP-35-Insurance with the following limits of liability:
 - Commercial General Liability not less than \$2,000,000 each occurrence/aggregate
 - Automobile Liability not less than \$2,000,000 each accident, covering “any auto” or covering all owned, non-owned and hired vehicles
 - Workers Compensation (statutory)/Employer’s Liability not less than \$1,000,000 each accident/disease. Your company must be a named insured on the policy.
 - Excess/Umbrella policy, if necessary to raise limits
 - Professional Liability of not less than \$2,000,000, for professional companies (survey, quality control testing, etc.)

CMAR, Owner, and other parties shall be named as additional insured with a waiver of subrogation on the WC/EL policy. Insurance companies must have an A.M. Best rating of A-VII or better.

Performance and Payments Bond for all Subcontractors
Supply for Material Suppliers



DBE CERTIFICATION

This Contract is subject to DBE requirements issued by USDOT in 49 CFR Part 26. Small Business Concerns are encouraged to participate

DBE CERTIFICATION

- Qualifications
- Trade codes
- Visit AZUTRACS website to confirm status
<https://utracs.azdot.gov/>
- For specific certifications questions contact:
azutracs/support@azdot.gov
Telephone: 602-712-7761

**Valley Metro Rail's
objective:**

***“To encourage
DBE/SBC
participation in every
contract”***



WHAT'S NEXT

- Visit our website for updates www.PHXlightrailopps.com
- Contact Kiewit Procurement team @ KiewitLRT@kiewit.com or Southwest.SBN@Kiewit.com
- Verify your DBE status and trade codes <https://utracs.azdot.gov/>

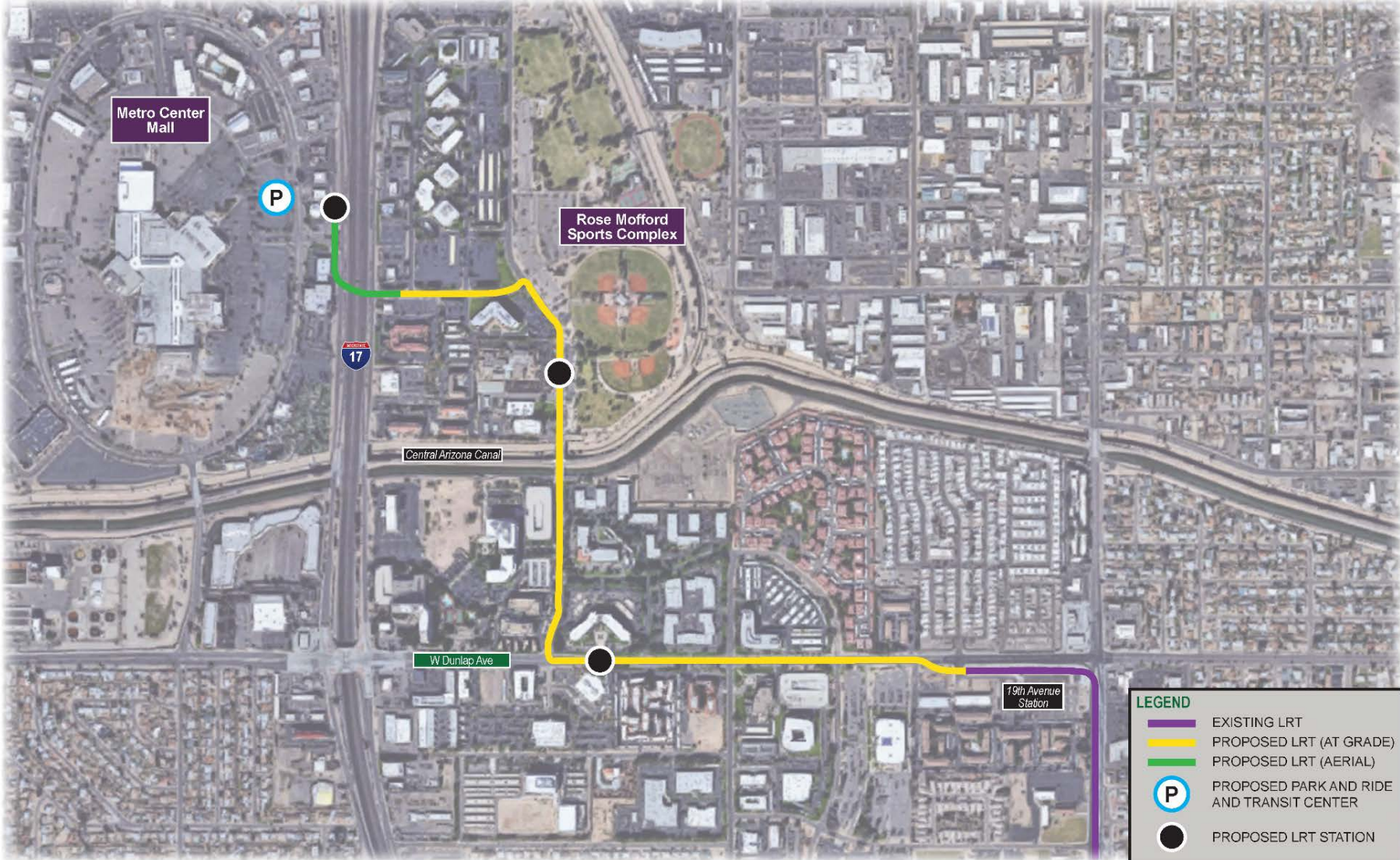




PROJECT OVERVIEW

Northwest Phase II LRT Extension

NORTHWEST PHASE II LRT EXTENSION ALIGNMENT





OPPORTUNITIES

Northwest Phase II LRT Extension

PRECONSTRUCTION

- Utility Location
- Survey
- 3D Modeling
- Constructability Reviews
- Cost Estimating
- Scheduling
- Consultant Services
- Engineering Services
- Environmental
- Geotechnical
- Graphic Design
- Materials Management
- Meeting Facilitation
- Office Supplies & Equipment
- Printing
- Staffing
- Catering
- Delivery Services
- Janitorial
- Site Video & Photography

NORTHWEST PHASE II LRT EXTENSION CONSTRUCTION OPPORTUNITIES

- Underground Utility Protection
- Traffic Control
- Erosion and Sediment Control
- Survey
- Quality Control
- Site Demolition
- Building Demolition
- Landscape And Irrigation
- Termite Control
- Water and Sewer Utilities
- Structural Steel
- Expansion Joints
- Storm Utilities
- Pavement Markings
- Fencing
- Asphalt
- Drilled Shafts
- Structural Concrete
- Site Concrete
- Precast Concrete
- Reinforcing Steel
- Sweeping
- Water Trucks
- Masonry

NORTHWEST PHASE II LRT EXTENSION CONSTRUCTION OPPORTUNITIES

- Roofing
- Roof Accessories
- Waterproofing
- Sealants and Firestopping
- Fireproofing
- Metal Panels – Interior
- Metal Panels – Exterior
- Doors and Hardware
- Glass
- Ceilings
- Painting / Coatings
- Counting Devices
- Fire Protection
- Automated Defibrillators
- Fire Sprinklers
- Elevators / Escalators
- HVAC
- Plumbing
- Electrical
- Metal Framing and Drywall
- Flooring
- Signage

NORTHWEST PHASE II LRT EXTENSION SCHEDULE

Activity	Dates
RFQ Due	Thursday, April 27, 2017
Shortlist RFQ	Monday, May 8, 2017
Release RFP	Thursday, May 11, 2017
RFP Due	Thursday, June 8, 2017
Presentations/Interview	Tuesday, June 20, 2017
Notice of Preliminary Selection	July 2017
Preconstruction Phase	2017 – 2019
Construction Phase	2020 - 2023